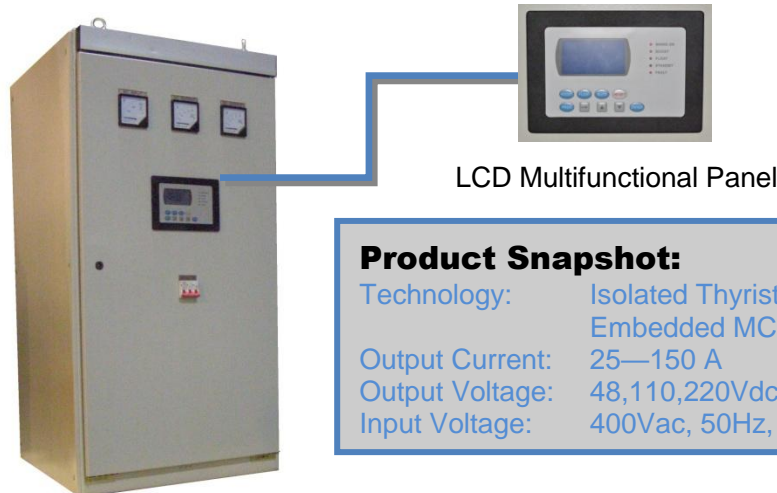


# Marstech<sup>®</sup> Rectifier Battery Charger

**A Compact Industrial DC System  
Specially Designed for Power  
Stations and Substations**



LCD Multifunctional Panel

### Product Snapshot:

Technology: Isolated Thyristor Bridge with Embedded MCU Digital Controller  
 Output Current: 25—150 A  
 Output Voltage: 48,110,220Vdc  
 Input Voltage: 400Vac, 50Hz, 3ph

Marstech standby power system chargers are built for both lead acid and nickel cadmium batteries. It has incorporated the most asked-for features and offers a high degree of standardization and reliability. Development of the system took into account the requirements of our customers and the experience acquired by Brotek over more than 10 years of activity in the area of power conversion technology.

Marstech system is based on a 6-pulse or 12-pulse thyristor bridge controlled by microprocessor. The system is provided with a LCD control panel, displaying the operational status of the equipment. Serial interfaces are available for remote control of the system. Upon request supervision application software is available for monitoring via PC.

## Main Options

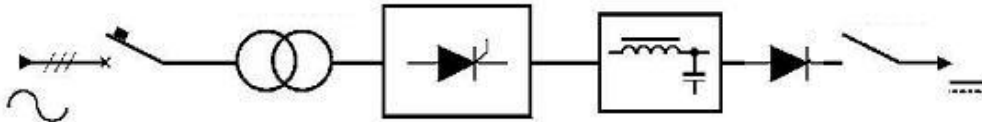
- ### MAIN FEATURES
- Industrial layout
  - Easy maintenance/front access
  - Input isolation transformer protected by MCCB
  - Full set of battery charging methods available
  - Microprocessor control
  - LCD Display

- Customized input and output voltage
- AC mains failure monitoring
- DC earth fault monitoring
- Temperature compensated battery charging
- Timer controlled battery charging
- Reversible operation (battery discharging to the ac mains)
- 6 pulse bridge
- Additional PFI filters
- Additional THD filters
- Special painting and protection degree
- DC/DC stabilizer( dropping diodes or chopper regulator)
- Parallel active load sharing (up to 6 can bus connection)
- double branch configuration
- Output distribution panels

## Technical Characteristics

Model 3BC-	110-25	110-50	110-100	110-150	220-25	220-50	220-100	220-150	
Size (A)	25	50	100	150	25	50	100	150	
Input voltage	3Ph. 400 +/- 20% Vac (other as option), 50–60Hz +/- 1Hz								
Input THD	6P, 27% THD								
Output voltage	110Vdc–220Vdc (Other as option)								
Ripple	+/- 2%Vn(RMS)								
Static stability	+/- 1% Vn								
Overload	120% for 20 min.								
Ventilation	Natural								
Efficiency (%)	> 90%								
Noise	< 60-62 , 1m (dBA)								
Dimensions (mm)	W	600	600	840	840	600	840	840	900
	D	520	520	600	600	520	600	600	600
	H	1600	1600	1800	1800	1600	1800	1800	1800
Weight (kg)	150	200	250	300	150	250	300	350	
IP Degree	IP20 (other as option)								
Color	RAL 7035 (other as option)								
Operating Temperature	-10°C to +40°C								

## One Line Diagram



## Standards

Low voltage assemblies	IEC 439
Semiconductor convertors	IEC 146
Power transformers	IEC 76
Degree of protection	IEC 529
Safety	IEC EN 50178
Electromagnetic compatibility	IEC EN 61000-6-1, IEC EN 61000-6-2 IEC EN 61000-6-4



For further information, please contact our local agent or distributor.

